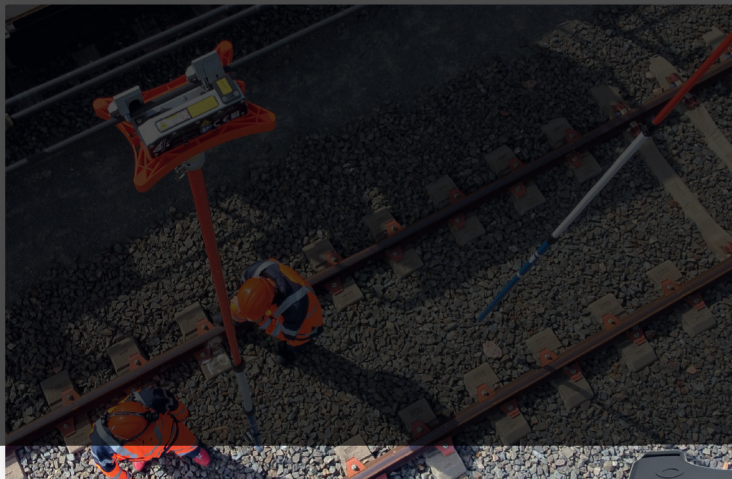




PREMIUM UTE CANOPIES

LG Chivalry Ute Canopies are premium, custom-built covers designed to enhance the functionality and aesthetics of your ute. Engineered for durability, these canopies are constructed from high-quality materials to provide superior protection against the elements, ensuring your gear stays secure and dry. With a focus on style and practicality, LG Chivalry Ute Canopies are designed to fit a wide range of ute models, offering sleek designs and advanced features such as easy access, secure locking systems, and robust construction. Perfect for work or leisure, these canopies offer both security and style for ute owners. Contact Oz Chivalry for more information. ↴



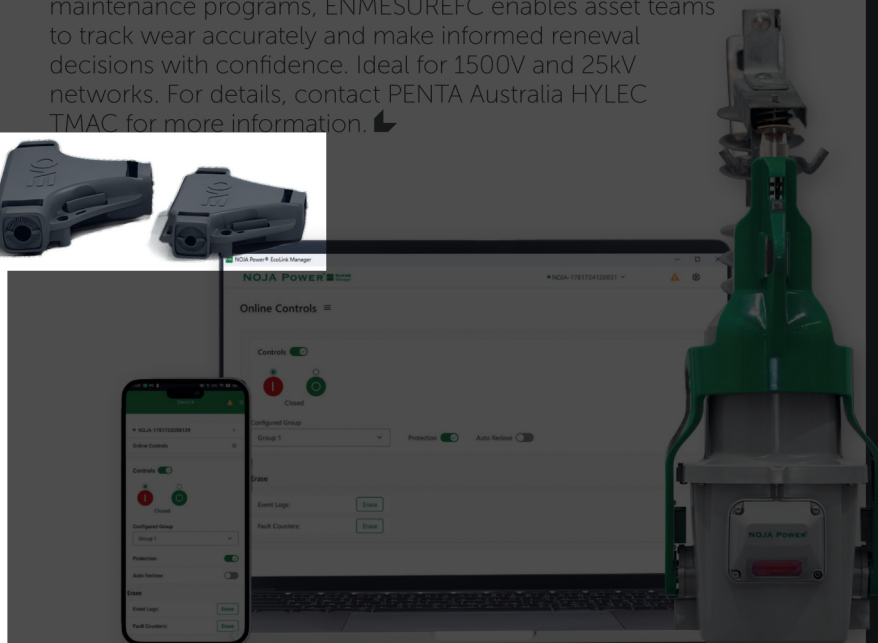
NEXT-GEN CONTACT WIRE INSPECTION

The ENMESUREFC Contact Wire Thickness Measurement Kit brings a new generation of laser-based inspection to rail overhead networks, delivering precise, repeatable contact wire thickness readings from ground level. Using laser profilometry with digital connectivity, it reduces the need for elevated access, minimises inspection variability, and supports safer, faster condition monitoring. Designed for modern data-driven maintenance programs, ENMESUREFC enables asset teams to track wear accurately and make informed renewal decisions with confidence. Ideal for 1500V and 25kV networks. For details, contact PENTA Australia HYLEC TMAC for more information. ↴



GEL-INSULATED TECH

The EVO range features advanced gel-insulated connection technology, designed and manufactured in Italy, providing IP68-rated joints and connectors for straight and branch connections on low-voltage cables. Patented flexible housings adapt to multiple cable diameters, while pre-filled, non-toxic gel prevents water ingress and condensation without additional glands or tools. The gel has no shelf life, allowing long-term storage without performance degradation. This technology improves reliability in harsh environments, reduces installation time, minimises maintenance, and extends service life. Spring-clamp and screw terminal options ensure fast, secure connections for residential, commercial, and outdoor applications. Contact DT Jointing Solutions for more information. ↴



SELF-POWERED RECLOSING

EcoLink delivers battery-free, self-powered reclosing for rural and remote lines, harvesting energy from as little as 0.15A. Its advanced protection handles "close onto fault" scenarios and reduces costly truck rolls—in many networks, a single prevented outage covers the costs of EcoLink installation. Designed to fit standard fuse cutouts, EcoLink lowers installation costs and boosts reliability. A patented interlock ensures safe disconnection by interrupting current internally, preventing external arcing and enhancing operator safety. For more information contact NOJA Power. ↴



SOLAR GROUND FAULT LOCATOR

The Fluke GFL-1500 Ground Fault Locator delivers precise, efficient detection of faults in high-voltage solar PV systems up to 1500V DC. Combining advanced FaultTrack technology with a transmitter, receiver, and non-contact clamp, it enables rapid fault tracing without system shutdown. Designed for CAT III 1500V DC and CAT IV 600V environments, the Fluke GFL-1500 enhances safety, minimises downtime, and streamlines maintenance across large-scale photovoltaic installations. For more information speak with a Fluke specialist or Fluke authorised distributor. ↴