

**MAKING CONNECTIONS EASIER**

Invented in 1938. Patented in 1939, nVent ERICO Cadweld has been making connections easier for installers from the beginning and leading the industry in quality, performance and innovation ever since. For contractors and engineers, they've put everything you need to know about Cadweld in one place—how to specify, how to install, how to select a mold and stay up-to-date on all things Cadweld. In 2020, nVent ERICO continues to innovate with an unwavering commitment to safe, adaptable, easy-to-use products. The nVent ERICO Cadweld Plus Impulse Exothermic Welding Control Unit incorporates new features designed to accommodate multiple power sources and improve safety.

[nvent.com/en-au/erico/cadweld](http://nvent.com/en-au/erico/cadweld)



**HANDHELD INSPECTION PROBE**

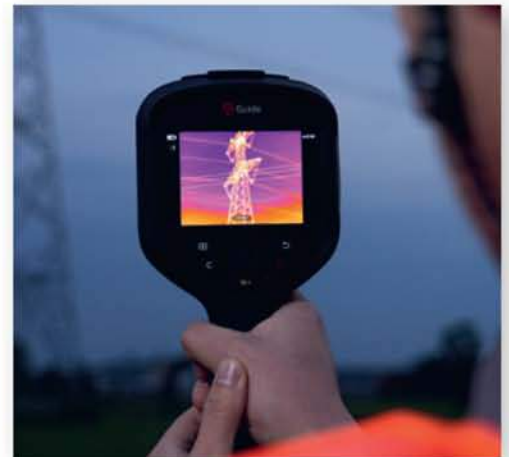
AFL's FOCIS Lightning 2 is a compact self-contained inspection probe that captures and displays the entire MPO end-face image in less than two seconds. With a simple-to-use touchscreen, it is a self-contained, tether-free, compact, handheld inspection solution. One button provides auto-focusing, centering, and Pass/Fail analysis at the connector and individual fibre level. It can be used to inspect MPO-8, -12, -16, -24 and -32 connectors. Results can be easily shared via USB and Bluetooth.

[AFLglobal.com](http://AFLglobal.com)

**INTELLIGENT THERMAL CAMERA**

The Hammer Series premium-grade thermal camera provides unsurpassed value for money in a compact and easy-to-use unit. The H6 model has a built-in self-developed high-sensitivity IR detector with a maximum resolution of 640x480, a 13MP visible light camera and five focusing modes. The high-precision thermal camera is designed specifically for the electrical/industrial field and helps users intuitively view high-definition images and temperature details of the target with the classic hammer shape. It has a 30Hz frame rate for fast and accurate access to more temperature data of moving targets, far beyond the same level of comparable products. More models to suit your requirements are also available from DT Jointing Solutions.

[dtjs.com.au](http://dtjs.com.au)



**EMERGENCY ECO EXIT**

Introducing the latest addition to the ELV-Lite by MyModular range: the 600mm Temp Emergency Eco Exit. Designed based on customer feedback, this innovative product empowers you with versatility and practicality. Use it as a 600mm emergency batten for extensive illumination or easily attach the exit decal to convert it into an emergency backlit exit light.

[mymodular.com](http://mymodular.com)

