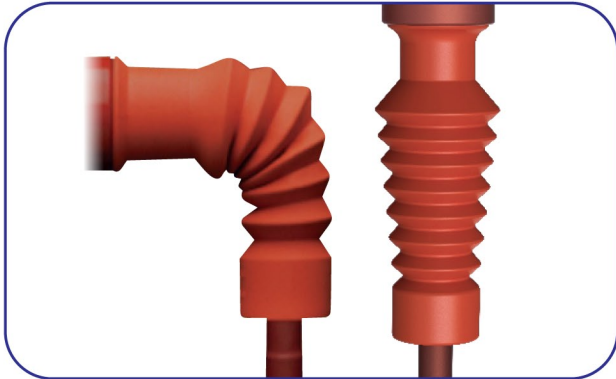




# BUSHINGBOOT™

The Ultimate Insulation



*Bushing Boots are non-tracking elastomeric insulating boots which are used in conjunction with terminations. They fit over the bushings of switchgear, insulating the area between the cable connector in either right angled or straight bushing connections. They are designed to enhance the phase-to-phase and phase-to-earth insulation. The boots can be used up to 25 KV application & protect against flashover or surges induced in switchgear & transformer boxes.*

BUSHING BOOT

## Selection Chart

PRODUCT CODE	TOTAL LENGTH	ID - BUSHING ENTRY	ID - CABLE ENTRY	THICKNESS
GSBB - 1	230 mm (min.)	50.5 mm (min.)	17.5 mm (min.)	2.5 mm (min.)
GSBB - 2	230 mm (min.)	50.5 mm (min.)	22.0 mm (min.)	2.5 mm (min.)

## Technical Specification

AC High Voltage	35 kV for 5 Minute
Basic Impulse Level	95.0 kV
DC High Voltage	48 kV for 30 Minute
Bushing Diameter	46 - 70mm

## Technical Drg.

