

# Hot Line Proximity Alarm

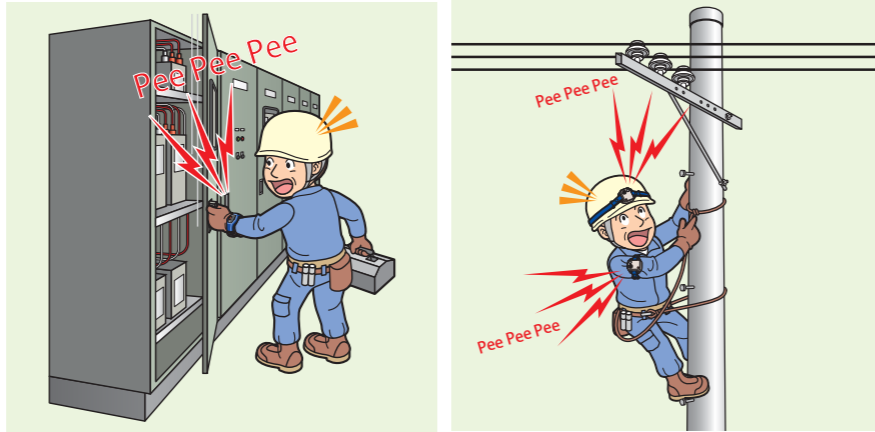
AC 6.6kV

Waterproof Auxiliary device for voltage detection

## Features

- Electronic buzzer alarm sounds when approaching a live line.
- It is ideal for preventing human errors, as there is no power switch and it is always on stand-by.

Auxiliary voltage detection device that sounds alarm at a distance when approaching a live equipment.



## Hot Line Proximity Alarm

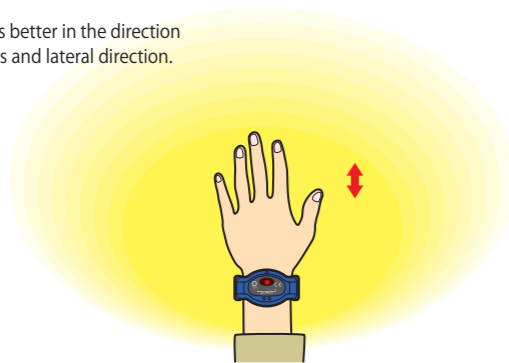
### What is a hot line proximity alarm?

- It is a product that generates an alarm when it detects a voltage at a distance to prevent accidental electric shock. Unintended access due to human errors such as preconception or misconception can be prevented.
- This product cannot be used as a voltage detector.

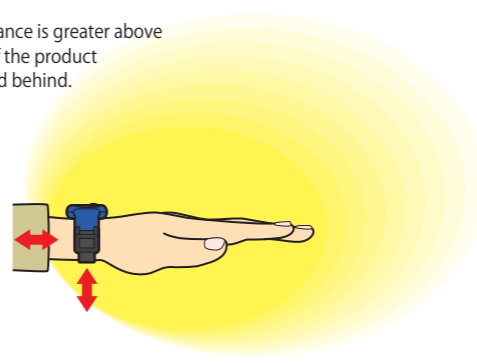
### Precautions before purchasing the hot line proximity alarm

- Detection sensitivity has been adjusted for cubicle works and overhead line works with general site conditions.
- The specification "OV-0cm" of this product is a distance under the "standard condition" set in the factory. The operational distance may become shorter, depending on environment, wiring conditions, etc. E.g.: When a grounded structure exists nearby, etc.
- The sensitivity of this product is directional. Sensitivity is reduced at the back and below the product.

Detection is better in the direction of fingertips and lateral direction.

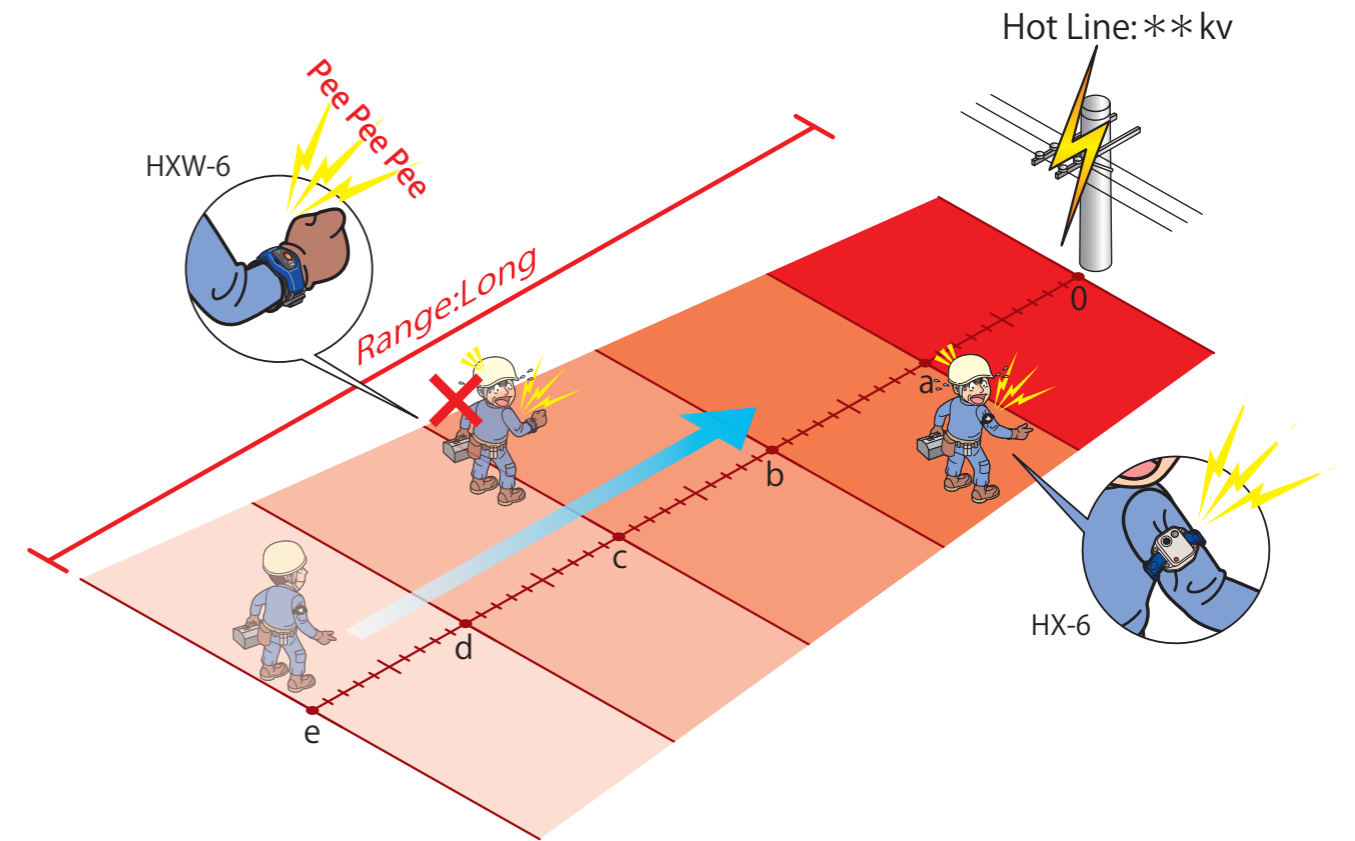


Detecting distance is greater above and forward of the product than below and behind.



## About Field Intensity (Changing of Operation Voltage Distance)

"Operation Voltage Distance is Flux by the surroundings."



Operation Voltage-Distance against Hot Line "\*\* kv"

